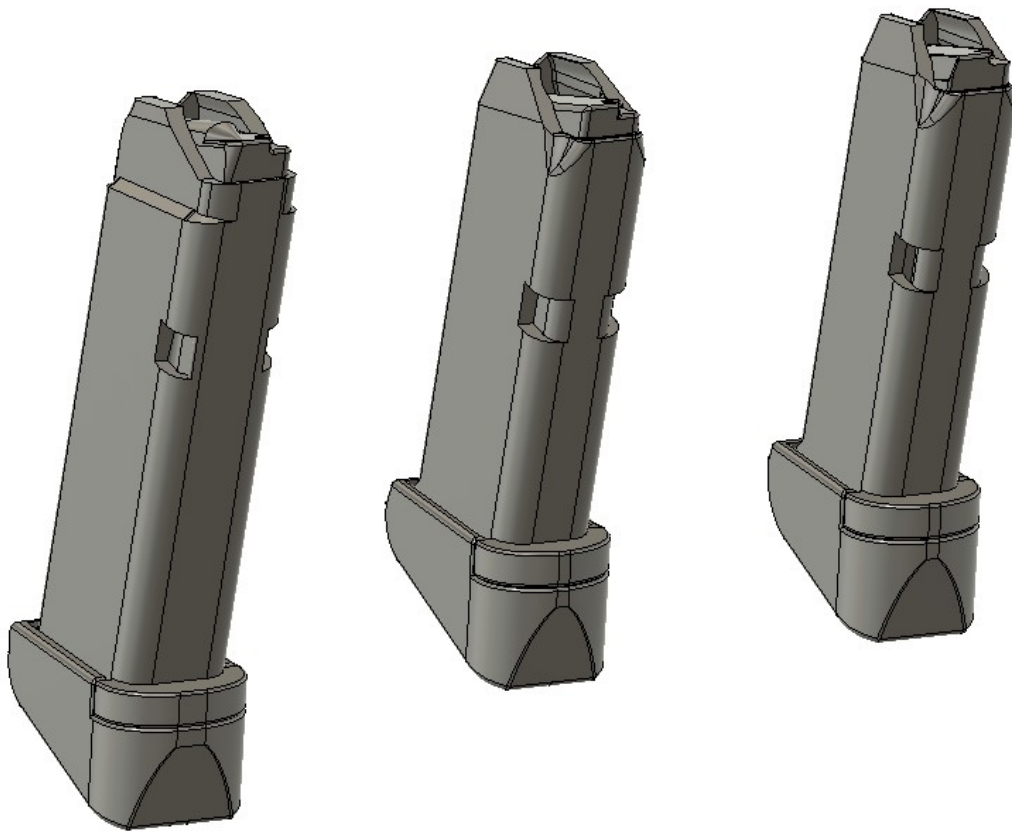


**Danny Meatball & Co.**

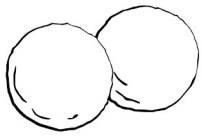
# **Small Frame Glock Mags**

G42 – G43 – G43X(G48)



A DMB & Co. Production

AWCY?



## **Description**

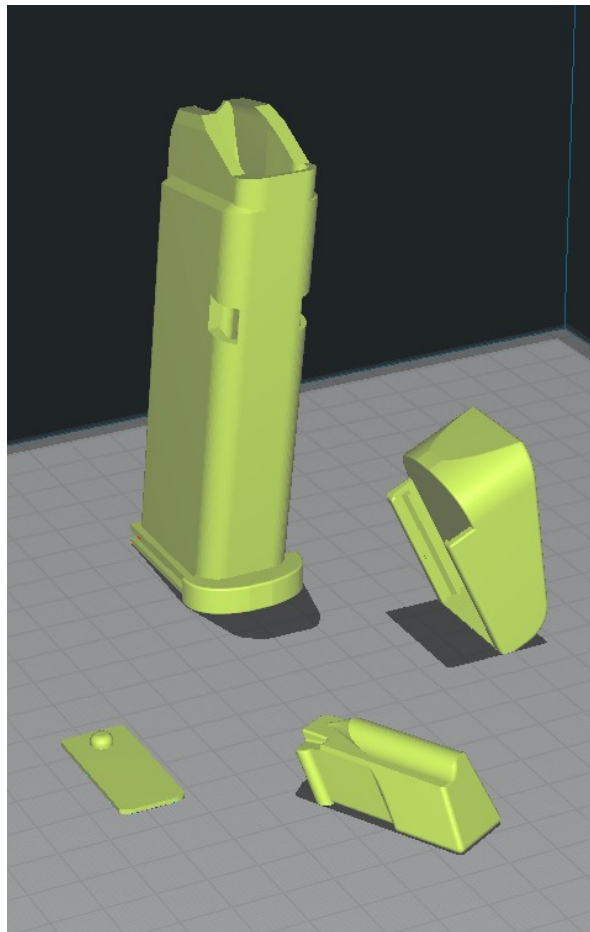
The official release of the DMB42, DMB43, and DMB43X Mags.

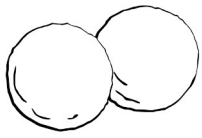
## **Settings**

Print with no fewer than 5 walls @ ~.2mm layer height in PLA+. Higher wall counts will help with longevity.

It is very important that your printer is calibrated to acceptable levels before printing any magazine. Magazines are extremely picky and you can expect malfunctions and stoppages from incorrect print settings.

## **Print Orientation**





## Assembly

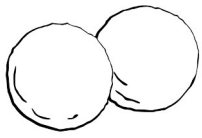
Assembly is straight forward. The parts go together as follows:

- Mag Body
- Follower w/ Spring
- Base Plate Lock
- Base Plate

It is recommended that you use a dry lubricant or light oil in the mag for smoothness.

Try to cycle the follower a few times with a suitable tool to break it in.

As with any 3D printed part, minor filing and modification may be required.



**Credits:**

**The Dev Team:**

Unseenkiller

proof

PY2A

AnonAnarchist13

If you have any questions, comments, improvements, or suggestions please find me  
[@dannymeatball:matrix.org](mailto:@dannymeatball:matrix.org)