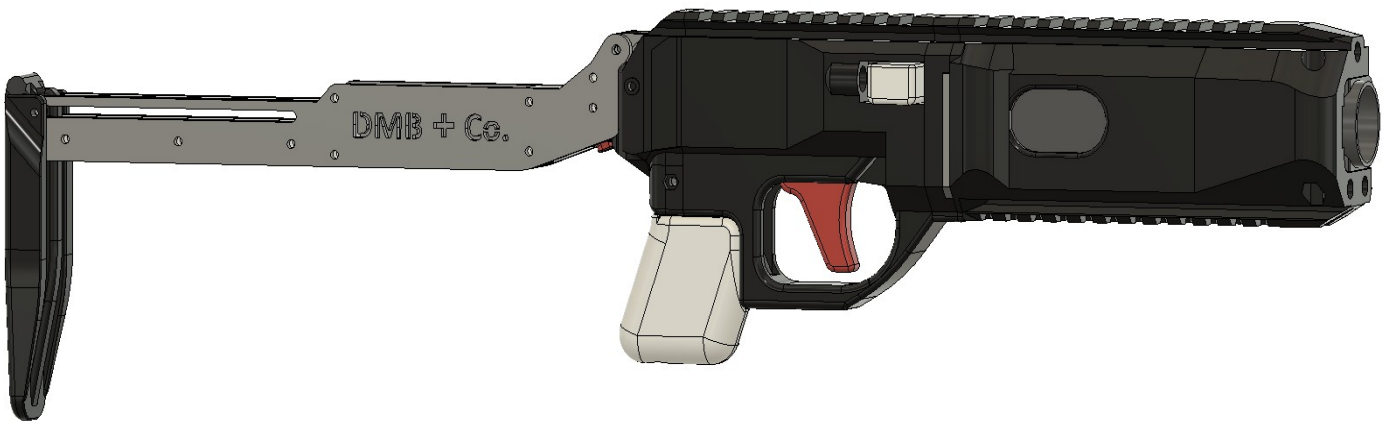
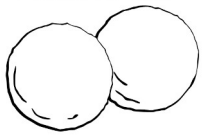


**Danny Meatball & Co.**

# **The Nameless Launcher**



A DMB & Co. Production  
AWCY?



## **Description**

This is a compact, double-action, single shot 26.5mm launcher. Capable of Standalone or under-slung configurations.

There are 2 main versions of the design: Regular and Short. Please choose the hardware accordingly.

## **Hardware**

1x 1/4in Threaded Rod (w/ Nuts) (290mm for regular build) (235mm for short build)

2x 1/4in Threaded Rod (w/ Nuts) (190mm for regular build) (135mm for short build)

2x M5x30mm Bolts & Nuts

1x M3x20mm Bolt & Nut

1x M3 Rod (45mm)

2x M3 Rod (75mm)

1x M3 Rod (23mm) (Or Equivalent for firing pin)

1x M6 Rod (115mm)

1x 8x25mm Spring

2x 5x35mm Springs

1x 5x15mm Spring

1x Ak Recoil Spring or equivalent (55mm) (75mm f/ramsets)

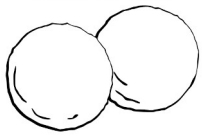
(Please read notes and supplementary information)

1in EMT or Equivalent (150mm regular) (100mm short)

1x M4x30mm Bolt & Nut (Optional f/stock)

1x M3x35mm Bolt & Nut (Optional f/stock)

1x 5x15mm Spring (Optional f/stock)



## **Settings**

PLA+ minimum. CF Nylon recommended.

All Parts: 12-15 Walls, 25+ Infill (Minimum)

Tree Supports are recommended, but do what you want.

## **Print Orientation**

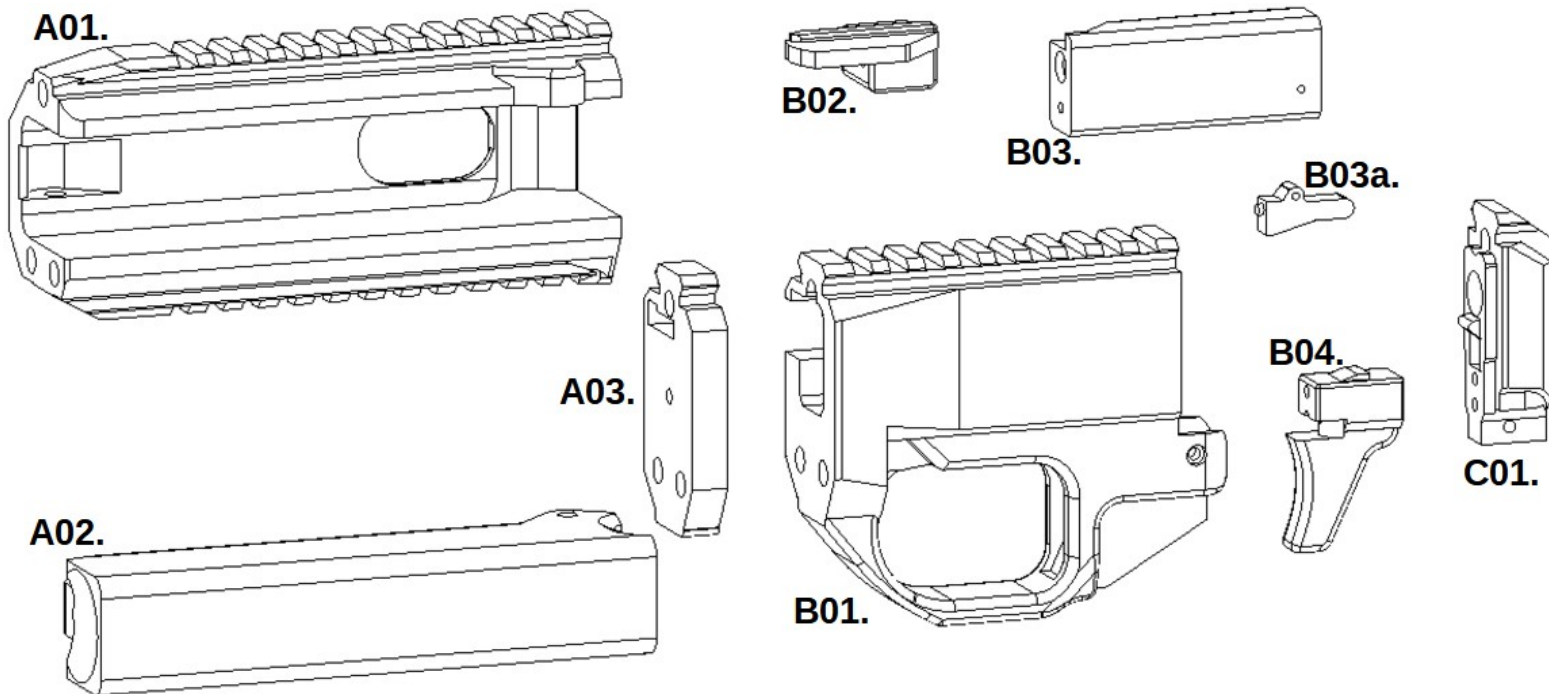
All parts are saved in their suggested orientations.

## **Ammunition and Loading**

Please refer to the [26.5mm Handbook](#) for 26.5mm Launcher & Ammunition information.

**Printed Parts Break Down**

Parts Numbering Guide	
A01.	Main Part
A01a.	Sub-assembly
A01.1.	Alternative to Main Part

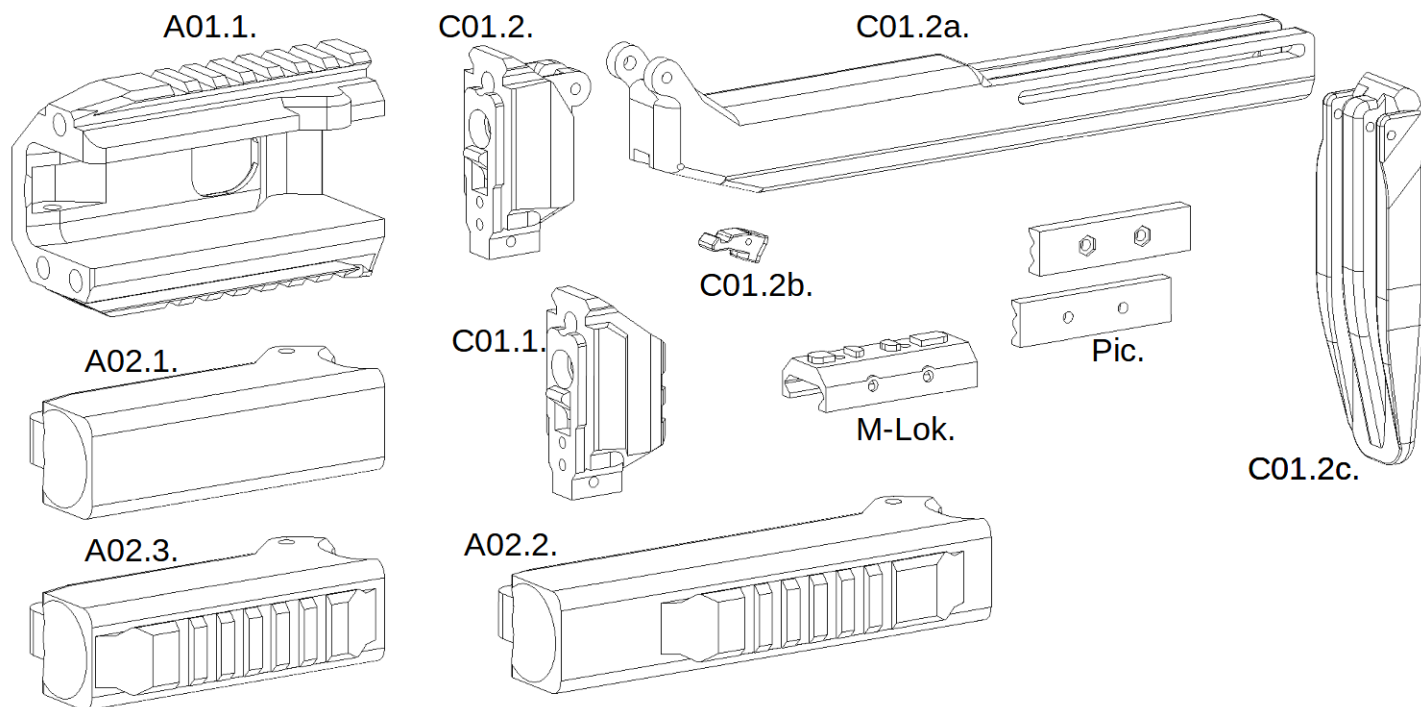


Printed Parts	
A01.	Front Body
A02.	Barrel Retainer
A03.	Breech Face
B01.	Receiver
B02.	Locking Lever
B03.	Striker
B03a.	Sear
B04.	Trigger
C01.	End Cap

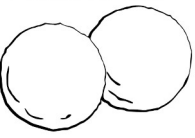


**Printed Parts Break Down**  
**Cont.**

<b>Parts Numbering Guide</b>	
A01.	Main Part
A01a.	Sub-assembly
A01.1.	Alternative to Main Part



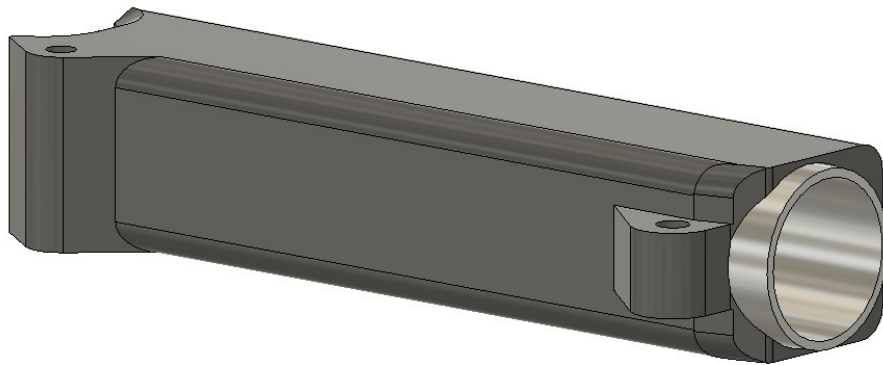
<b>Alt. Printed Parts</b>	
A01.1.	Front Body (Short)
A02.1.	Barrel Retainer (Short)
A02.2.	Barrel Retainer (Pic Rail)
A02.3.	Barrel Retainer (Short) (Pic Rail)
C01.1.	End Cap (Pic Rail)
C01.2.	End Cap (Stock)
C01.2a.	Stock Body
C01.2b.	Lock Button
C01.2c.	Butt Pad



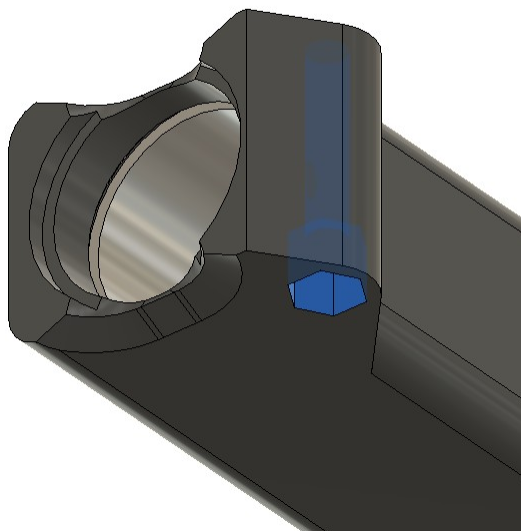
## Assembly

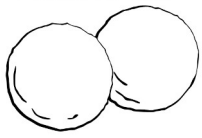
**NOTE:** You may need to drill out all holes to ensure the linear rods can move freely.

Insert your barrel into the Barrel Retainer using an epoxy of your choice.

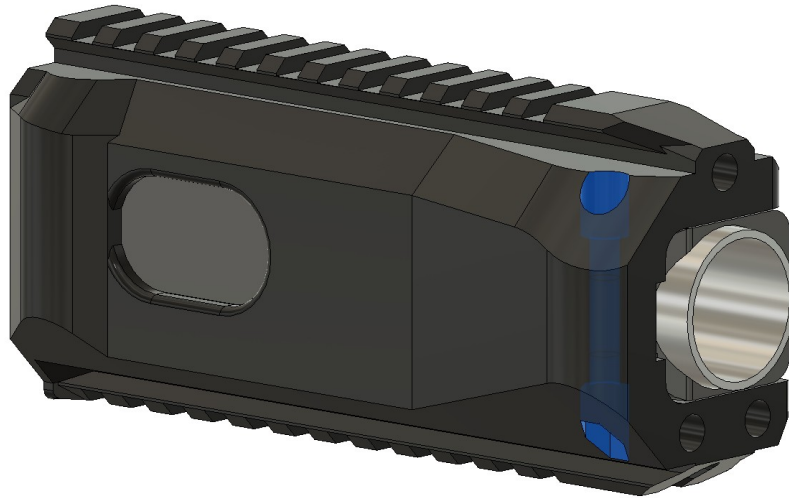


Insert an M5x30mm bolt and nut into the rear of the Barrel Retainer.





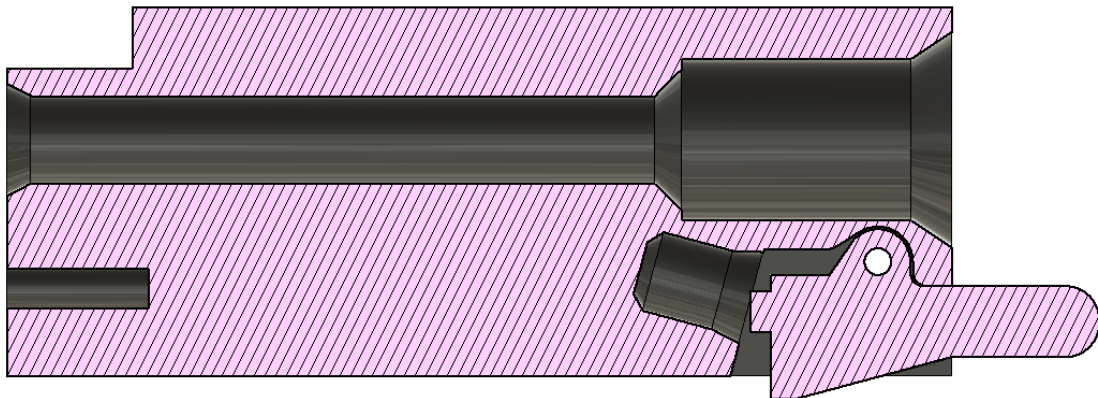
Install the Barrel Retainer into the Front Body. Install an M5x30mm bolt and nut through the pivot point. Ensure full range of motion.

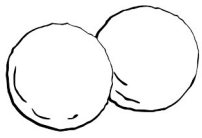


Install the 5x15mm spring and Sear into the Striker. Insert a small snip of filament or 2mm rod through the hole to retain the Sear. Install the 23mm M3 rod or equivalent into the front Firing Pin Hole

**Note:** You may need to drill the holes in the Striker and Sear for easier installation.

**Note:** You may need to file the sear surface flat to ensure good contact with the trigger.

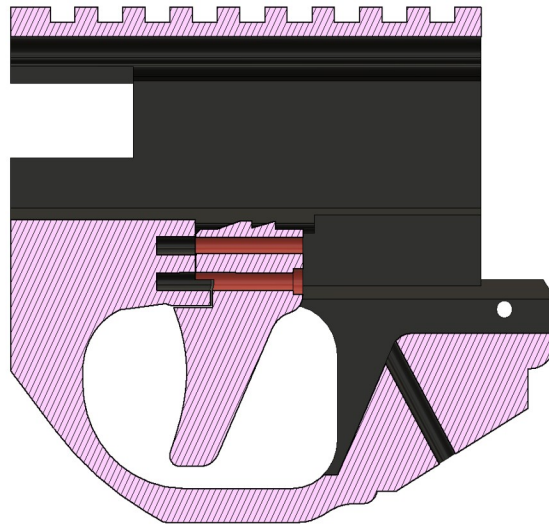




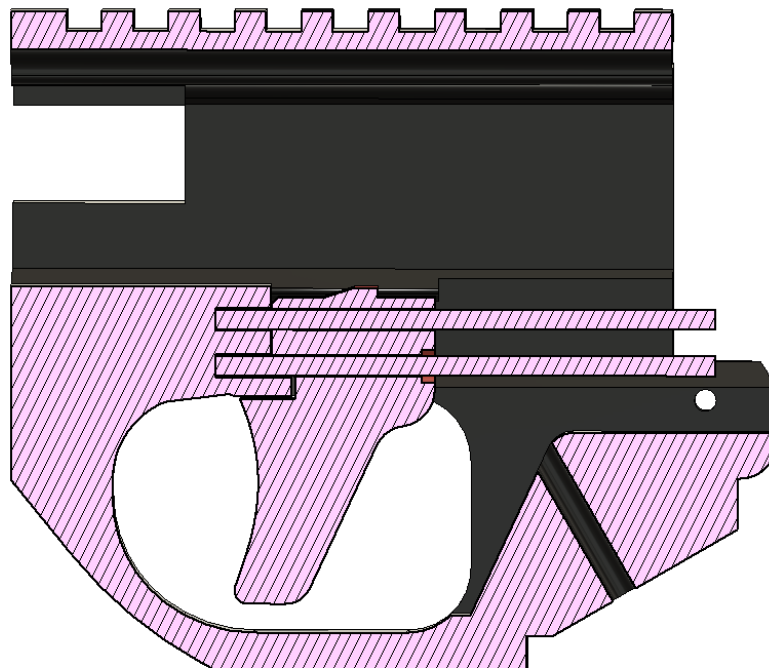
Install the Trigger through the back of the Receiver.

**Note:** You may want to drill the holes of the Trigger to ensure it slides smoothly on the M3 rods.

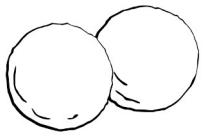
**Note:** You may need to file the 2 trigger sear surfaces to ensure good contact with the Sear.



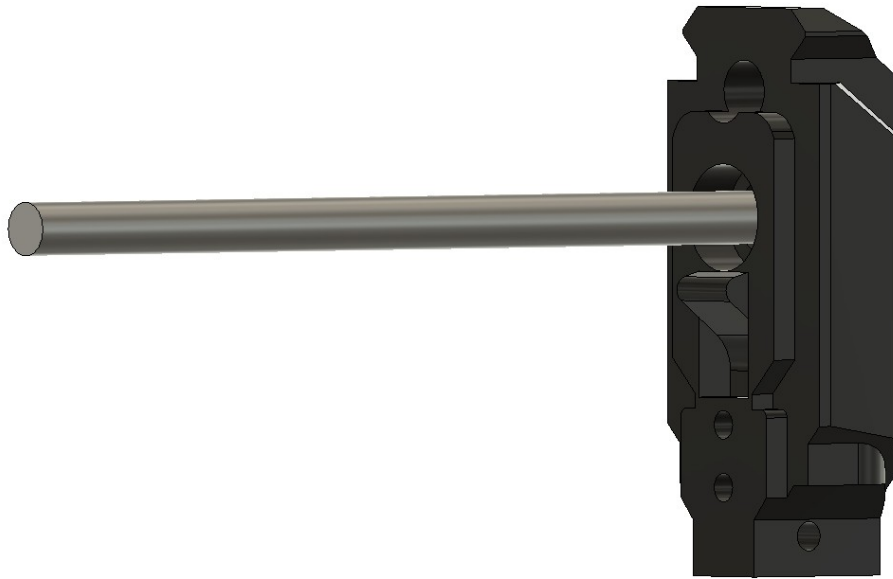
Install the two 75mm M3 rods through the Trigger. Ensure they fully seat into the receiver holes.







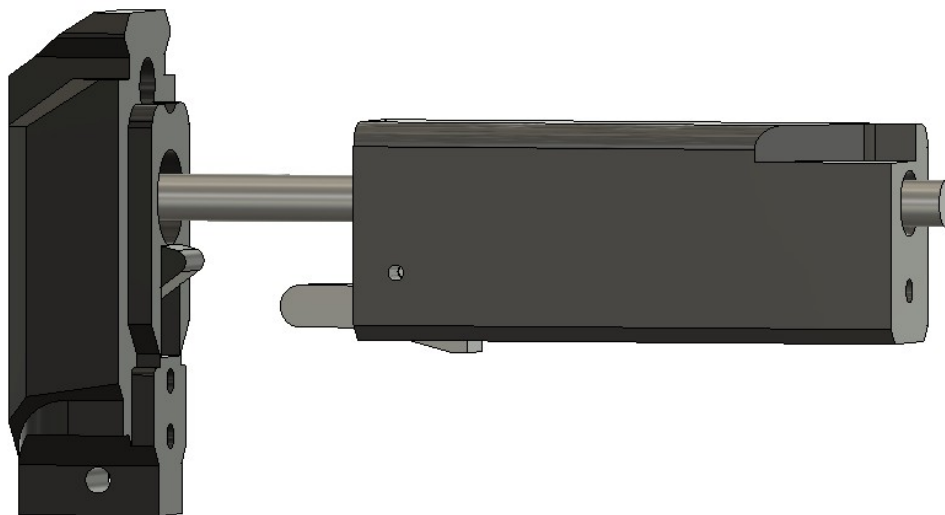
Install the 115mm M6 rod into the End Cap.

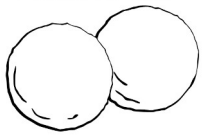


Install the main spring and striker assembly over the rod.

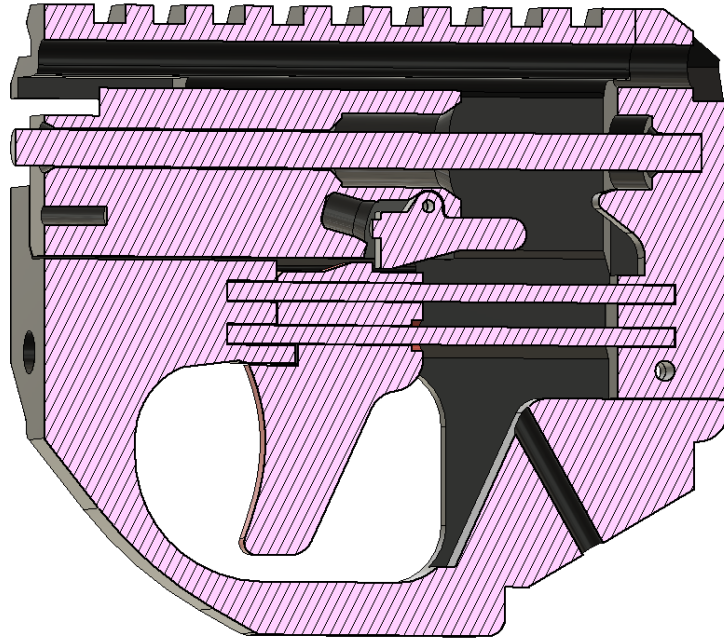
**NOTE: Manually manipulate the Striker backwards. Ensure the Sear makes contact with the End Cap and moves into its released position.**

**If the Striker does not move all the way back, you may need to shorten your main spring or find a main spring with a smaller wire diameter.**

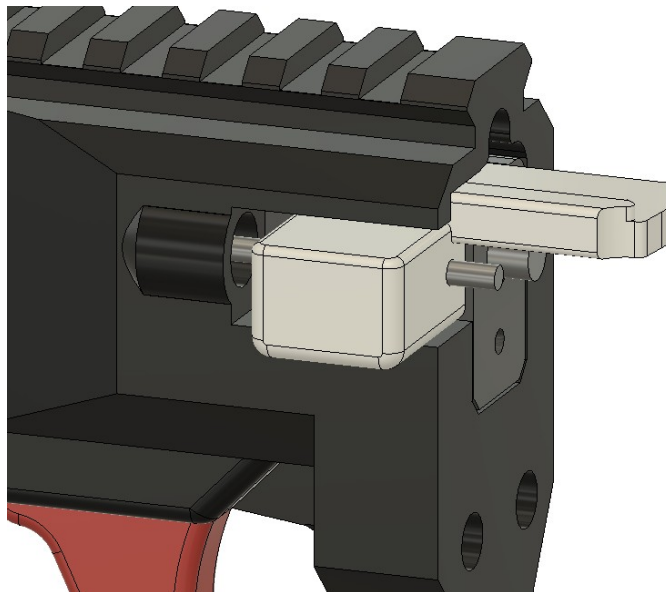


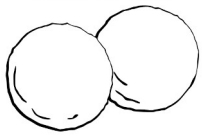


Install the two 5x35mm springs over the 3mm trigger rods and install the End Cap and striker assembly into the rear of the Receiver. Install the M3x20mm bolt & nut through the Receiver and End Cap

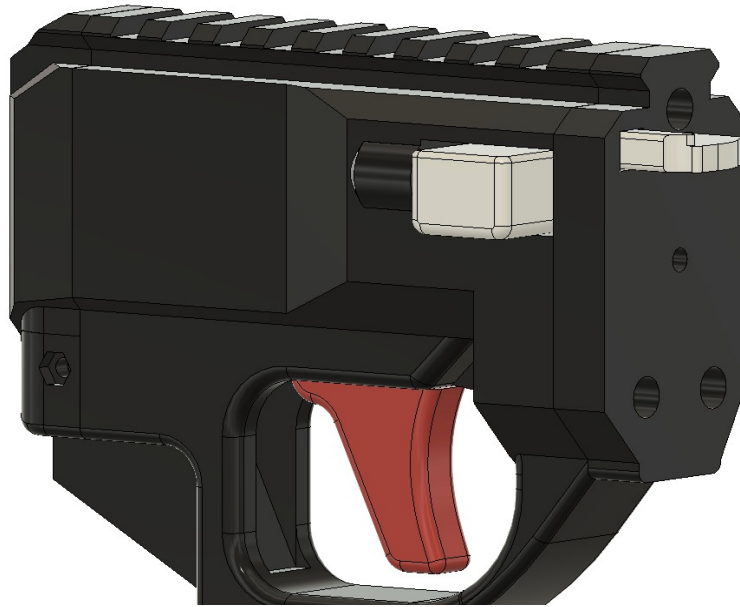


Install the M3x45mm rod, 8x25mm spring, & Locking Lever into the front of the Receiver.

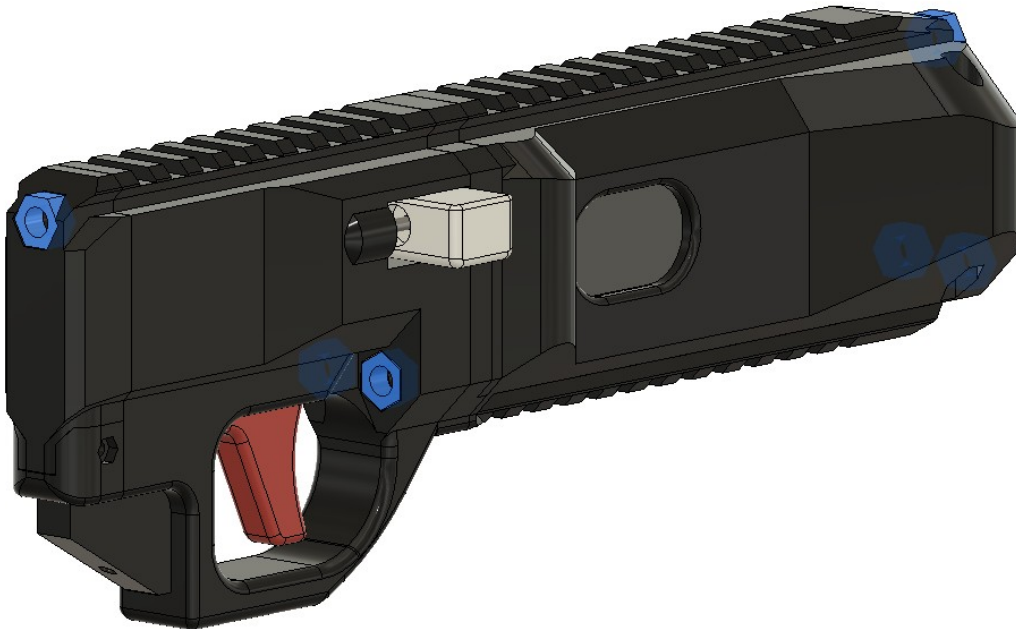


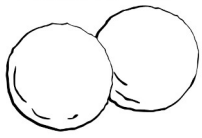


Install the Breech Face into the front of the Receiver.



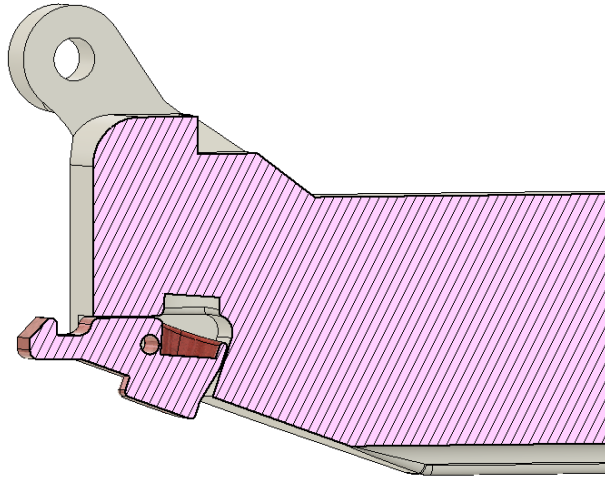
Using the 1/4in rods and nuts, attach the Front Body and receiver assembly.  
Note: There are pockets in the Receiver and End Cap that hold 1/4in Nuts.



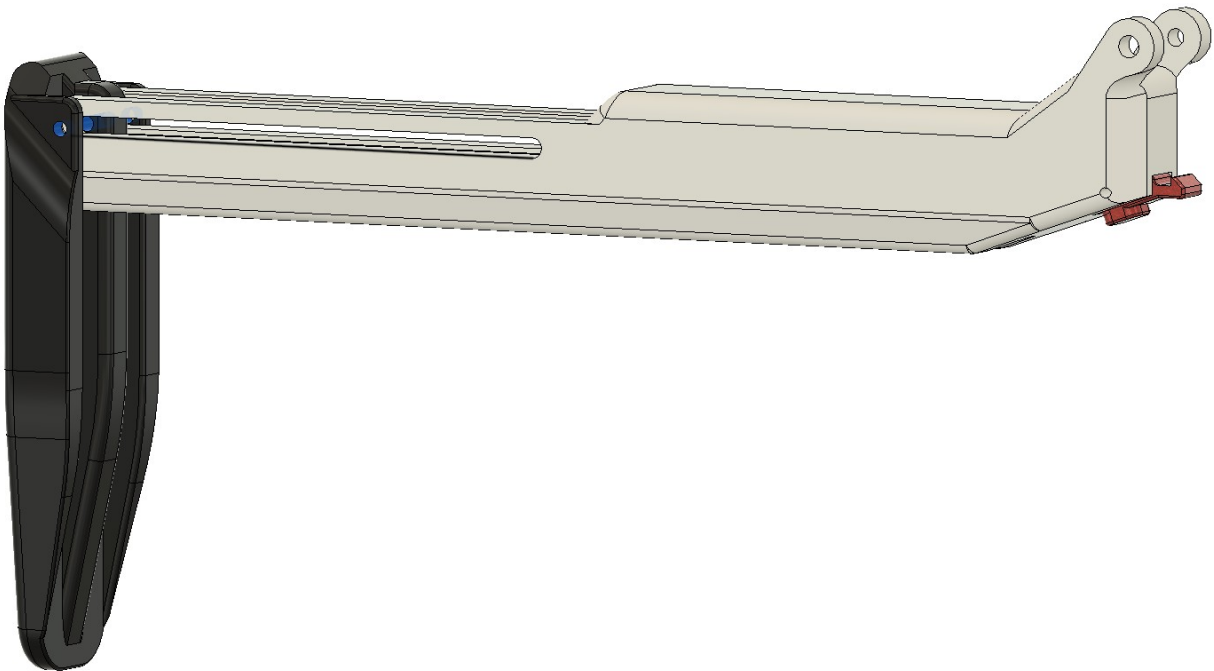


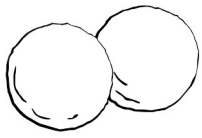
## Stock Assembly

Insert the 5x15mm spring & Lock Button into the Stock Body. Secure with filament snip or 2mm rod.



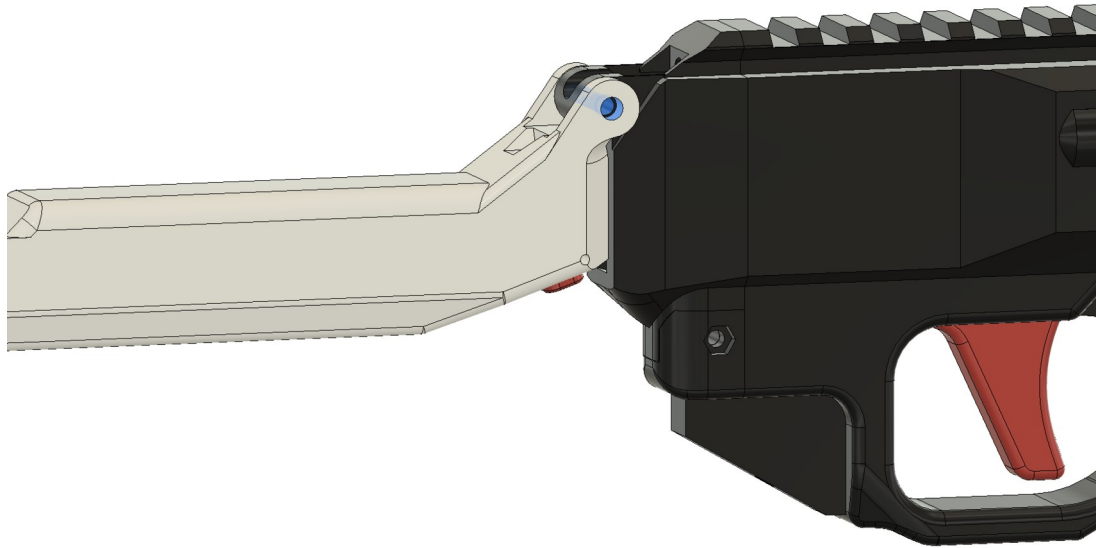
Using the M3x35mm bolt & nut, attached the Butt Pad to the Stock Body.





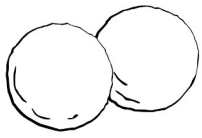
Using the M4x30mm bolt & nut attach the stock assembly to the End Cap.

**Note:** a nylock nut or lock washer is recommended.



For the SCS stock, insert the heat inserts into the stock spacers. Attached the side plates with m3 bolts. (See SCS Parts section)





## **SCS Parts**

If you plan on ordering SCS parts, you'll need a few more pieces of hardware.

16x M3 heat set inserts  
16x M3x6-10mm bolts

There is a separate folder that includes the SCS DXF files and alternate STLs that replace the replace the Breech Face, End Cap, and Stock Body.

**Note:** The regular **C01.2. End Cap (Stock)** can be used in lieu of the **X02. End Cap (Stock) (SCS) & Hinge (3mm) (x2)**. The SCS hinges only serve to re-enforce the stock pivot point.

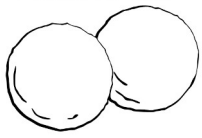
## **Supplementary Information**

The design has been tested up to Purple Ramsets and 20gr BP and has shown no signs of failure.

During testing, one tester experienced an ND. This is thought to be from the design. As you close the barrel, the striker is pushed back as to not get the loaded shell stuck on the FP. But as the Barrel locks into place, the striker is returned to its resting position. In specific circumstances, with sensitive primers, this could lead to an ND. The design was updated to include a second sear surface on the trigger to catch the striker when pushed back. This ensures the FP will not strike the primer until the trigger is pulled.

Due to this second surface, users may feel the sear momentarily catch on the first surface when the trigger is pulled. Continue pulling and the striker will release.

The mainspring is based on an AK recoil spring, but suitable substitutes are fine. Please note that springs vary widely. Spring wire diameter and space between coils caused the most issues during testing as the spring would fully compress before the striker reached the end of its travel. During my testing, I found that springs with a wire diameter of 1.2-1.5mm and coil distance of ~3.5mm worked just fine, even for Ramsets.



## Credits

### Alpha Team:

40oz

PTact

Atticus

EWV

Copper\_Shop\_419

### Beta Manager:

40oz

### Beta Testers:

eadams2010

jdm07

Big Chonk

durbanpoisonpew

Bitplumb

If you have any questions, comments, improvements, or suggestions please find me  
@dannymeatball:matrix.org or @danny.meatball on Instagram